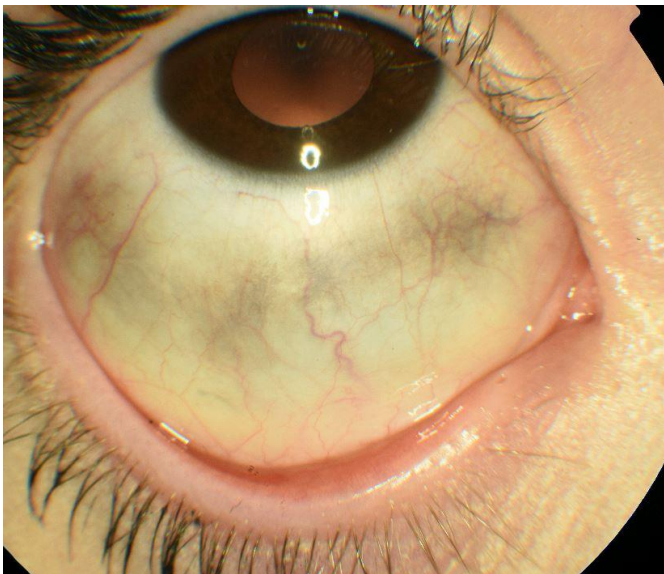




the same. Some become lighter or darker over time. Some slightly increase in size, particularly during growth spurts. A small number of naevi and papillomas will completely disappear with time. Even when the appearance changes, there is no need to worry; these changes are harmless. Some children, particularly those with darker skin, can have larger grey or brown flat patches on the white of the eye:



These patches are often present at birth or in the first few years of life and can change in size and colour over time. Usually these do not cause a particular risk of eye problems later in life. Rarely, if these patches are very large, with dark colouration of the skin around the eyes, or changes inside the eye, there is a small risk of eye problems later. This will need to be monitored; the eye specialist will advise you.

### **How will this be monitored?**

An examination by an eye specialist will confirm what type of spot is on your child's eye and might take a picture of the spot; the rest of the eye will be checked as well. If a spot is raised or uneven, it may become red and sore due to being dry or irritated. In this case, you can apply artificial tear drops, which you can buy at the chemist over the counter. Most children will be discharged from the clinic after their first visit.

### **Can surgery remove spots?**

Surgery can remove spots from the conjunctiva, but often leaves a scar that can be raised and irritable and if this happens the area may still not look 'normal'. Spots on the eye are therefore usually left alone, unless they become very big or cause severe irritation.

Authors: Paediatric information group  
Revision number: 2  
Approval date: August 2022  
Review date: August 2025

**Moorfields Eye Hospital NHS Foundation Trust**  
**City Road, London EC1V 2PD**  
**Phone: 020 7253 3411**  
**[www.moorfields.nhs.uk](http://www.moorfields.nhs.uk)**

**Moorfields Direct telephone helpline**  
Phone: 020 7566 2345  
Monday-Friday, 8.30am-9pm  
Saturday, 9am-5pm  
Information and advice on eye conditions and treatments from experienced ophthalmic-trained nurses.



**Patient advice and liaison service  
(PALS)**

Phone: 020 7566 2324/ 020 7566 2325

Email: [moorfields.pals@nhs.net](mailto:moorfields.pals@nhs.net)

Opening hours: Monday to Friday,  
except bank holidays

Moorfields' PALS team provides confidential advice and support to help you with any concerns you may have about the care we provide, guiding you through the different services available at Moorfields. The PALS team can also advise you on how to make a complaint.

