



**Moorfields
Eye Hospital**
NHS Foundation Trust



Moorfields Magazine

A magazine for patients, carers,
members, staff and visitors

Spotlight on research at Moorfields

Bringing our
values to life

Construction begins
for Oriel

New AI development
for leading cause of
child blindness

Summer 2023
moorfields.nhs.uk



C O N T E N T S



**A day in the life of
Shruti Chandra**
a principal investigator at
Moorfields Biomedical
Research Centre

16

Moorfields Magazine

Please [email](#) to register for
regular updates from Moorfields

- 3** Welcome from Martin Kuper,
chief executive
- 4** Meet Laura Wade-Gery,
our new chair
- 6** News in brief
- 9** Caring for your eyes
this summer
- 10** Construction begins for Oriel
- 12** AI breakthrough in cause
of child blindness
- 14** Developing new criteria for
a common cause of blindness
- 15** 12 Moorfields staff named
on Power List 2023
- 16** A day in the life of a principal
investigator
- 18** Spotlight on... the Clinical
Research Facility
- 21** Moorfields Private
- 22** Awards and accolades
- 24** Moorfields updates
- 26** Moorfields Eye Charity
- 28** Friends of Moorfields 60th
anniversary
- 30** Moorfields governors
and key dates

Welcome from Martin Kuper, chief executive



Welcome to our summer issue, featuring an explanation of how brilliant ideas become breakthrough treatments in the words of those involved in every step of the process.

We showcase an artificial intelligence breakthrough that could make a significant contribution to reducing sight loss in developing countries and, closer to home, the new Eye Envoys programme helps to improve eye health in social care settings locally.

Work is progressing on Oriel, our new integrated eye health centre in Camden. Preparation of the two-acre site has been completed with the demolition of six buildings and construction has now started.

Laura Wade-Gery, our new chair, explains why she wanted to work with us and the ways in which she hopes to make a difference for patients and for those working at Moorfields. Both she and I explain how we intend to use our

values of excellence, equity and kindness to transform the experience at Moorfields for patients and staff.

We celebrate achieving the nursing Pathway to Excellence accreditation as well as hearing from a patient, Drew, why he nominated one of our nurses for a special recognition award. Other staff achievements include our strongest-ever performance in The Ophthalmologist magazine's global Power List and Clifford Laytis reaching 40 years of service.

We also provide practical tips on eye care during the summer and introduce our new governor, Emily Brothers, to you.

It's a packed and varied issue which I hope you will thoroughly enjoy reading.

A handwritten signature in black ink, appearing to read 'M. Kuper', written in a cursive style.

Martin Kuper,
chief executive





“

I hope that my skills and experience are the right mix to help our executive team deliver our exciting strategy in a culture where everyone can thrive.

”

Laura Wade-Gery

Meeting Laura Wade-Gery, our new chair

Laura Wade-Gery lived in five countries before she was 18, thanks to her father's career as a diplomat. This has given her a real awareness of different cultures and a desire to address the health inequalities that impact people's sight and quality of life.

She is a mum with a young daughter, lives on a working farm and enjoys

cooking, sea swimming, running and the outdoors.

She joined us as chair at the start of February, and has a vision for her new role, as she explains:

“After chairing NHS Digital, I was initially attracted to Moorfields because of my own experience of a sight threatening condition. I then saw how its world-leading clinical and research excellence,

with the opportunity to use technology and data to transform how we deliver eyecare, gives us the chance to lead the evolution of the NHS for its next 75 years.

“What's unique about Moorfields is the 'bench to bedside' scope of what we do – high end research combined with front line care. That's hugely motivating.

MOORFIELDS NEW CHAIR

“My official role is to lead the board in ways that visibly demonstrate a culture of trust, openness, integrity and inclusivity, and that help the executive team deliver excellent care for all patients and support for our staff.

“I have already seen an immense commitment to our patients and their care by staff and volunteers. Our patient experience

scores are already very strong and the care delivered excellent; I would love to see our staff survey results really improve, to show that all our colleagues feel supported.

“I am impressed by our openness to new ways of doing things and can see we need to do more to make all our teams feel appreciated and able to be their best. Together with Martin and the board, I

am determined that we take the right actions across our organisation to address the underlying issues and concerns. I want us to follow through on our values, and work together to improve everyone’s experience of working for Moorfields. I am committed to ensuring we can all be proud to work for Moorfields; and can be confident that we will be treated with respect.”

A culture in line with our values

“A year or so ago, we refreshed our values, as part of the new strategy for Moorfields. This means we strive to do everything with excellence, equity and kindness.

“Since then, we have been working on how to bring these to the fore in the culture of the organisation.

“We have rolled out training for our staff to encourage them to report anything they see that does not reflect these values. We have Freedom To Speak Up guardians in place for them to do so anonymously, and we are strengthening this process, but there is much more we need to do.



“As a patient, you can help us with this by letting PALS know about your care, or anything you see around our sites; we take everything that is raised seriously.

“As a board, we are determined to make sure all patients receive excellent clinical care equitably and with

kindness, and that all our staff will treat those around them in the same way.

“I welcome Laura’s commitment to these principles and to eradicating behaviours and actions contrary to our values.”

Martin Kuper,
chief executive

Moorfields at Stratford now open

Our new hub at Stratford Broadway will serve east and north-east London with a wide range of eye care services, close to Stratford's shops, services and excellent transport links.

Its increase in capacity for glaucoma, medical retina and cataracts will help us to reduce outpatient waiting lists. It will reduce the time for diagnostic appointments to just 45 minutes and will also, later this year, create new operating theatres for east and north-east London patients.

All the activity from our Mile End service has closed. The current Stratford at Sir Ludwig Guttman will close later this year, and about a quarter of the appointments from Barking have transferred across.



Our friendly team



“I was, and am still, a Moorfields patient in Barking - they saved my sight. I was so grateful, I started as a volunteer, and I now have the privilege to serve as a member of staff. I have worked at Mile End and Barking, so many patients will recognise me on the reception desk.”

Samuel Imaikop



“I first joined Moorfields in 1987, at City Road. Since then, I’ve worked at Mile End and Sir Ludwig Guttman, so I hope I will be a familiar face and voice to patients on their first visit to Stratford.”

“Some people may miss the familiarity of the old sites, but Stratford is easier to find and brings everything together under one roof in east London for the first time.”

Cherry Mock



“I lived in Newham for 30 years, have volunteered at Barking, and I am so looking forward to supporting people at the smart new eye centre in Stratford – I thoroughly enjoy meeting new people.”

Kam Nandha

What patients say



“This was an easier journey for me than going to Mile End, and I was surprised how much new equipment they’d squeezed in.”

Jason Hopkins,
Forest Gate

“It was much faster than my last set of tests.”
Sheila Rose, Stratford

“My treatment was in and out, much less walking about than at Mile End.”

Mohammed Adea,
Highbury

The team gave me excellent phone directions to guide me in, and my diagnostic tests were much quicker than before.”

David Brian Woodley,
Isle of Dogs



Improvements at Croydon

.....

Mayor of Croydon, Jason Perry, met with the surgical day unit's nursing team led by Joyce Amanor, chief nurse Sheila Adam and Jack Wooding, divisional manager for Moorfields South, to re-open the surgical day unit.

"We are absolutely delighted to have successfully completed

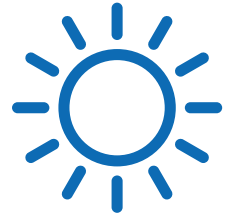
the refurbishment of the day unit at Croydon," said Jack Wooding. "The works improve the whole of the day unit space and provide staff with a well-deserved brand-new staff break area."

"The unit will play a vital role in supporting our surgical patients with an excellent environment both pre- and post-surgery, helping our staff to continue to provide

excellent ophthalmic care."

The surgical day unit at Moorfields Eye Centre sees over 200 patients a month. The new layout separates pre- and post-operation areas to improve patient flow. We have also redecorated the interior with more modern, comfortable furniture for patients recovering from surgery.

Caring for your eyes this summer



With summer here, it's important to remember to protect your eyes against bright sunlight. Overexposure to UV light is associated with skin cancer, [photokeratitis](#), [cataract formation](#) and [conjunctiva growths](#).

“Both sunglasses and brimmed hats reduce the effects of UV exposure,” says optometrist Jessica Fielding. “If your sunglasses are non-prescription, check them for the CE/UKCA mark on the inside their frame to ensure they meet British standards for safety. Even with sunglasses, you should never look directly at the sun, as this can cause permanent damage.”

Hay fever can cause symptoms from early spring until late summer. You might find your eyes are itchy, red or watery, or the eyelids are swollen.

Hay fever treatments

- Cold compresses using a cooled flannel or eye mask can relieve itching.
- An over the counter eye bath or ocular lubricants, to wash out irritants.
- Over the counter anti-allergy eye drops and antihistamine tablets relieve symptoms.

Should symptoms persist beyond two weeks, you should consult your GP or optician.

“More people are cycling in the summer, so we see people coming into A&E with grit in their eyes from passing cars,” says Gordon Hay, A&E service director at Moorfields. “It’s happened to me, to our colleagues, so it can happen to you! All you need is a pair of safety glasses to prevent this.

“More people are out gardening, meaning dirt, pebbles or even thorns in eyes. Again, take precautions when handling power tools, using safety glasses when appropriate.

“If you do need to come into A&E, remember you can always log on first to our [virtual A&E service](#). It may save you a trip into central London or helps us to plan your tests.”





Oriel breaking ground ceremony, photographed by Simon Harvey

Construction begins for Oriel

It's full steam ahead for Oriel, our new centre for eye care, research and education.

Oriel is the joint initiative between Moorfields Eye Hospital, the UCL Institute of Ophthalmology and Moorfields Eye Charity that will see services move from their current premises near Old Street to part of the St Pancras Hospital site in Camden.

In February this year we signed a contract with Bouygues UK (BYUK), our construction partner, to build Oriel. The £300 million contract is a significant step forward in making Oriel a reality.

BYUK is onsite and demolition has now been completed. The transformation of our two-acre site is impressive, with most

“
Demolition was a complex process that required careful planning and consultation.
”

O R I E L

of the six buildings now removed. This has prepared the site for us to begin construction.

Demolition was a complex process that required careful planning and consultation. We are working closely with our new neighbours to help keep them informed of the construction phases. In line with the project's sustainability principles, as much of the material from demolition will be recycled or donated.

In July, we 'broke ground', a construction milestone when a spade enters the ground to signify the start of the construction phase. From there, we will build Oriel over the next four years working closely with our advisory groups to make sure the new centre meets the needs of our patients, staff and the local community in the Knowledge Quarter of King's Cross.

Later this year we will share the latest Oriel building designs with our staff, patients and stakeholders. Stay tuned for details about how to get involved and share your feedback. We plan to open the new centre in 2027.



Watch a [YouTube video](#) of time-lapsed demolition footage.



Oriel

Creating the centre for
advancing eye health

For more information about Oriel, please visit oriel-london.org.uk or email moorfields.oriel@nhs.net

Philanthropy has a vital role in making Oriel a reality. Moorfields Eye Charity and UCL are working in partnership on a fundraising campaign to support Oriel. Thank you to the very generous donors who are supporting Oriel. We look forward to speaking with individuals interested in supporting our plans.

Please contact Rachel Jones, director of development - email rachel.jones310@nhs.net or call 020 7521 4610.



AI breakthrough in detecting leading cause of childhood blindness

.....

An artificial intelligence (AI) tool could be an effective way of identifying retinopathy of prematurity (ROP), the leading cause of childhood blindness in middle-income countries, a study published in the Lancet found.

The team developed an AI model that can identify which at-risk children have ROP, which may lead to blindness if

left untreated, and they hope their technique could improve access to screening in the many areas with limited neonatal services and few trained ophthalmologists.

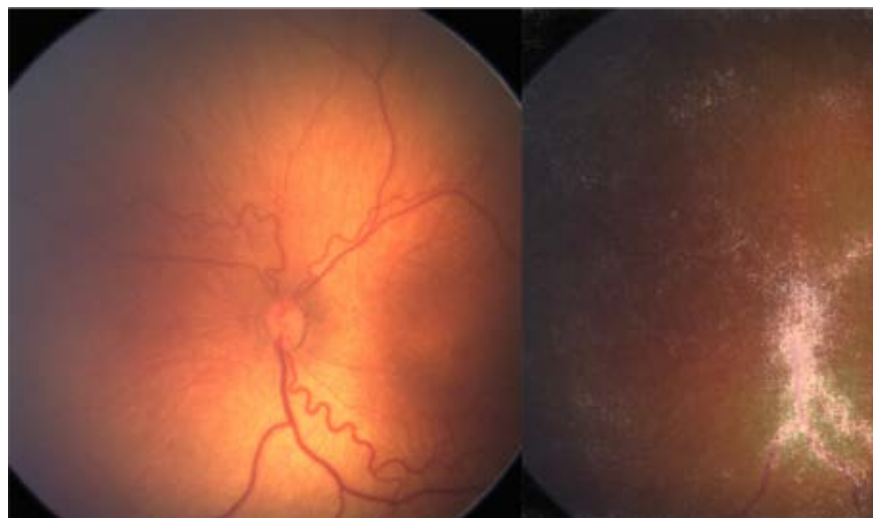
Konstantinos Balaskas, director of the Moorfields Ophthalmic Reading Centre, said: “ROP is becoming increasingly common as survival rates of premature babies improve across the

globe, and it is now the leading cause of childhood blindness in middle-income countries and in the US.”

ROP is a condition primarily affecting premature babies, where abnormal blood vessels grow in the retina, the thin layer of nerve cells at the back of the eye. These blood vessels can leak or bleed, damaging the retina, possibly leading



Siegfried Wagner



The left image shows a scan of a diseased eye, with the right showing how the tool identifies the diseased area.

RESEARCH

to retinal detachment. While milder forms of ROP only require monitoring, more acute cases require prompt treatment.

Symptoms cannot be seen by the naked eye, meaning the only way to identify the condition is by monitoring infants at risk.

The AI model was trained on eye images from 1,370 newborns from London's diverse communities. The tool's performance was compared with assessments from senior ophthalmologists and against data samples sourced from the US, Brazil and Egypt. It was found to be as effective as the clinicians and across different populations. Furthermore, the tool has been developed as a code-free deep learning platform, which means it could be used in new settings by people without coding experience.

Siegfried Wagner, lead author, said: "We hope that the tool will enable a trained nurse to take images that could be assessed by the AI tool, allowing treatment without the need for an ophthalmologist to manually review the scans.

"AI tools are particularly

useful in ophthalmology, a field heavily reliant on the manual interpretation and analysis of scans for detection and monitoring. We have found further evidence that AI can open up access to sight-saving treatments."

"We hope that our technique to automate diagnostics of ROP will improve access to care in underserved areas and prevent blindness in thousands of newborns worldwide," Konstantinos adds.

“
ROP is the leading cause of childhood blindness in middle-income countries and the US.

”
Konstantinos Balaskas



Researchers develop criteria for a common cause of vision loss

A study led by Dr Axel Petzold, consultant ophthalmologist at Moorfields Eye Hospital and consultant neurologist at UCL Queen Square Institute of Neurology, has developed diagnostic criteria for optic neuritis, which was published in *The Lancet Neurology*.

The study was conducted with over 100 experts from 60 countries as equal partners.

Up until now, there has been no consensus regarding the classification of optic neuritis, and a 2018 study in America found it was overdiagnosed in 60% of patients. This new classification will potentially reduce the risk of misdiagnosis and guide the treatment and management of the condition.



Dr Axel Petzold

“Our study attempts to internationalise and classify the many syndromes that can manifest as optic neuritis,” said Axel Petzold. “We hope our classification will lead to the identification of yet more immunological causes of optic neuritis and ensure uniformity in identifying sub-types of the condition. I’m hopeful that the criteria we have

developed will lead to a consensus on how to design treatment trials for optic neuritis in the future.”

“

“Optic neuritis is overdiagnosed in 60% of patients. This new classification will potentially reduce this.”

”

Moorfields staff named on The Ophthalmologist Power List 2023

Twelve Moorfields staff were named on The Ophthalmologist Power List 2023, a list of the 100 most influential people in the world of ophthalmology.

Two staff at Moorfields and UCL Institute of Ophthalmology (IoO) were named in the Power List's top ten, recognising them for truly world-leading impact. With twelve names, the Moorfields and UCL IoO partnership is the most represented joint site in the world across the whole list.



Top 10

Sir Peng Tee Khaw
director of research, and development at Moorfields Eye Hospital, director of NIHR BRC at Moorfields Eye Hospital and UCL IoO.



Top 10

Gus Gazzard
consultant ophthalmic surgeon and director of surgery at Moorfields Eye Hospital, and professor of ophthalmology at UCL IoO.



The other Power List members were (from left to right): Paul Foster, David (Ted) Garway-Heath, Louisa Wickham, Sobha Sivaprasad, Mariya Moosajee, Anthony Khawaja, Keith Barton, Pearse Keane, Adnan Tufail and James Bainbridge.



Congratulations to all the staff who feature on the Power List 2023, and to the teams who have underpinned their achievements.

A day in the life of...a principal investigator

Shruti Chandra is a clinical trial fellow and principal investigator (PI) at the NIHR Moorfields Biomedical Research Centre (BRC). She describes working at the Moorfields Clinical Research Facility, which she first joined in 2019.

.....

“At the moment, I’m working on seven different studies. On a typical day I’ll be seeing patients and managing the trials, which can include recruitment, arranging patient visits and speaking to data officers, project managers, nurses and the pharmacy. Beyond that, I’ll be grading retinal images for future studies and working on research papers.

“I always wanted to do research, but the opportunity never arose while working in India.

If I was going to do research, I wanted to do it at the best place for it, so when I saw an opportunity at Moorfields, I was really keen.

“You have the best people

here, the best brains and the best trials. I had published just a couple of papers before I joined Moorfields, now I have over 30.

“I’m looking forward to starting work on my own study this summer, where I had the research idea, put forward a study protocol and applied for funding. It’ll be an observational study with patients with dry age-related macular degeneration (AMD) and geographic atrophy (GA).

“When I was recruiting patients for a dry AMD study that Professor Sivaprasad was leading, almost every patient would ask me, if they were going to go blind? When would their eyesight worsen and how

fast? Is there anything I could do about that?

“I want to find a way of telling patients how their prognosis looks, beyond an obvious change in



A DAY IN THE LIFE

vision. Sometimes when a patient already has poor vision, they don't recognise slight changes in it, but they might notice how easily they manoeuvre, or read, or drive, or how they see in low light.

"My work is towards finding whether a person's AMD is progressing and who would be eligible for a potential trial if possible. If progression is very slow, I may be able to tell them they might have five or even ten years before more significant sight loss – which makes a big difference to how they can plan their future.

"I've come to know my patients really well, what's happening in their lives, and they know about my life – I still have the cards they gave me when I was having my baby. Some of my patients, who are artists, created a piece for an exhibition to reflect how a patient's vision is distorted by AMD, and they said they were inspired by me and how I'd explained the condition to them. They're the best, and they're why I'm obsessed with dry AMD, I want to be able to give them hope!"

“

I want to be able to give them hope!

”

Shruti Chandra





Spotlight on the Clinical Research Facility

Since 2007, the NIHR Moorfields Clinical Research Facility (CRF) has pioneered the translation of laboratory discoveries for the benefit of patients with eye conditions. This includes the first gene therapy to cure an inherited human disease and the first stem cell membrane therapy to treat the most common cause of blindness in the developed world.

Such landmark medical advances have cemented our global reputation for ophthalmic experimental medicine, attracting biotech, device and pharmaceutical industry investment that is underpinned by our NIHR Biomedical Research Centre (BRC) at Moorfields Eye Hospital and UCL Institute of Ophthalmology.



Nadine Abdelgalil
Lead clinical research practitioner

“

Clinical trials are a great medium between scientific research and patient care. Working here is an excellent opportunity at the forefront of contributing to science and medicine, and it's a privilege to work alongside a team that is so passionate and at the forefront of advancing research.”

“No two days are the same, and all the patients we encounter leave their personal mark on the team.

”

SPOTLIGHT ON



Francesca Amalfitano
Head of research administration

“

I'll have been working here for 19 years in December. I was a coordinator for glaucoma research, before the CRF, before the BRC, and I've worked my way up to manage a team of 38 staff.

“We're proud of what we're doing here, and it's very satisfying to take a project all the way through to completion. We take on new studies one of two ways; either one of our principal investigators has a study they're passionate about that they put forward, or we're contacted directly by a company developing a new treatment or device.

”



Jacqueline Miller
Paediatric research nurse

“

I started at Moorfields in 2014, having never worked within ophthalmology before. Nine years on, I am the lead (and only) paediatric research nurse. I thoroughly enjoy my work. I look after and care for children and young people who take part in eye and vision research studies.

“In addition, I am a part time PhD student studying at King's College London University, funded by the NIHR Moorfields BRC. My project, which aims to improve the eye and vision research experiences of children and young people, builds on my work as a research nurse; I have been overwhelmed by the support given to me by the NIHR Moorfields BRC and Moorfields research team to conduct this work.

”

Take part in research

Are you interested in taking part in our ground-breaking research? We always need volunteers, and award-winning ROAM (Research Opportunities at Moorfields) makes this easier than ever.

Available nationally to anyone with an NHS number, simply register at

research.moorfields.nhs.uk and we will do the rest, including alerting you of new studies you may be suitable for.

Further details from moorfields.roam@nhs.net, or ask us at your next appointment.



SPOTLIGHT ON



Muhammad Elrify

Research technician



I'd never worked in healthcare before I joined the Moorfields diagnostic hub at Brent Cross as a technician in 2021, and I've now been part of the CRF for the last eight months. I feel I've come on in leaps and bounds.

"We have about 75 active studies right now, on all sorts of intriguing things – stem cells, gene therapy, treatments for wet and dry AMD.

"It's really rewarding to meet and assess patients. These are people giving their own time, their own eyes, to help push things forwards. They're putting their vision in our hands.

"I feel I've progressed a lot, I've pushed myself, I've learnt so much. I recently presented our work at a conference in Rotterdam, to over a hundred delegates from across 17 countries. I never would have imagined I could do that.



Yvonne Shek

Research play specialist



My job is to improve the research experience for children, young people and their families and carers. I also come up with initiatives to better the research environment and experience and prepare for the EyeYPAG (Young People Advisory Group) meetings.

"On a typical day, I prepare age-appropriate play materials for those scheduled to come in, introduce myself, offer them activities and start playing! Sometimes patients can be nervous about the testing, so I help provide emotional support and get them ready.

"Patients are usually in for a long day so, by the time they're done, it's pretty much time for me to wrap up and head home.

"We've received so many positive comments from children and young people and their parents and carers. It means so much to know they value the play service.





Moorfields Private



Moorfields Private continues to support Moorfields to discover, develop and deliver excellent eye care, sustainably and at scale.

Moorfields Private, New Cavendish Street

Our new central London location is going from strength to strength since its formal opening.

The refractive laser suite and theatre are now fully operational with patients able to choose whether to be treated at our City Road or New Cavendish Street locations. The refractive suite offers Lasek, Lasik, TransPRK and SMILE laser eye surgery and our theatre offers procedures under a local anaesthetic, such as

cataract treatment, eyelid surgery (blepharoplasty) and glaucoma trabeculectomies.

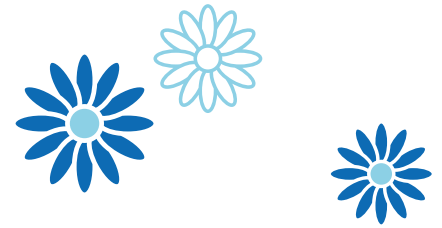
Engaging with optometrists

Optometrists are essential to the eye health of our communities and Moorfields Private has been working to strengthen relationships between them and hospitals for the benefit of patients. In February, Moorfields Private had a large stand at 100% Optical, the largest

trade show in the UK for optometry. Many of our consultants joined us to speak with optometrists and deliver educational talks.

Moorfields Private's first Annual Symposium for Optometrists was held at the King's Fund, with 96 optometrists in attendance to hear a keynote from Professor David Gartry and take part in four interactive sessions hosted by our consultants.

DAISY awards



Congratulations to Aurelia Onen, Marisa Rodriguez Romero, Daniela Suszer, Reyman Apostol, Sylvie Tyler-Moore, Cecilia Tribunal, Carol Orina, Lolita Jose, Elmer Enriques, and Yvonne Caluya for receiving DAISY Awards and to Ange Gomez and Louvilla Esapol for earning Moorfields special recognition awards, for

delivering exceptional care to patients and colleagues.

“I attended Moorfields after being diagnosed with a detached retina,” said Drew, who nominated Ange. “I was in a very distressed state, as I believed that I had permanently lost the sight in my right eye. Luckily, I was seen by Ange. She managed to

calm me down and she allayed my fears prior to my operation. Ange is a credit to the NHS and the nursing profession.”



First cohort of international nurse recruits become registered nurses

We recently welcomed three cohorts of international nurse recruits in partnership with the Capital Nurse collaborative. International nurse recruits are provided with local accommodation to help them settle in London and support for their training and OSCE (objective structured clinical examination) to enable them to become registered with the Nursing and Midwifery Council.

The first cohort of recruits,



Irene Botsane, Evelyn Aziebu, Beulah Tella and Christian Legarda, were presented with the Moorfields nursing pin badge by Sheila Adam, chief nurse, for passing their OSCE and becoming

registered nurses.

“It’s a dream come true for me,” said Beulah. “I’m grateful and feel immensely blessed that I got an opportunity to work with Moorfields.”

AWARDS AND ACCOLADES



Congratulations to Catherine Wagland, infection control lead at Moorfields, who won silver in the 'Infection Prevention Nurse of the Year' category at the British Journal of Nursing Awards 2023, for her work as part of the trust's response to monkeypox.

Currently on secondment to the Oriel project and NHS England's New Hospitals Programme, Catherine commented: "I am truly honoured to receive this accolade, which reflects the high standard of work being delivered here at Moorfields."



Congratulations to Patrick Yu-Wai Man, honorary consultant neuro-ophthalmologist, the winner of The ARVO Foundation's 2023 Ludwig von Sallmann Clinician-Scientist Award, for his research into gene replacement therapy for Leber hereditary optic neuropathy (LHON).

"It is a great honour to receive this award," said Patrick Yu-Wai-Man. "My hope is that this award will highlight the significant unmet needs for individuals affected with this condition, which results in significant visual impairment in children and young adults."

Happy anniversary to Clifford Laytis, who has been working at Moorfields for 40 years.

Cliff started at Moorfields on 31 January 1983 as a storeman in the hospital's store on the lower ground floor – a role which has now evolved into goods receipt and distribution officer, which sits under logistics.

Cliff's line manager, Carl

Williams, logistics manager at central stores, said:

"Clifford has continuously worked at Moorfields Eye hospital for the last 40 years and remains a presence on site in the central stores serving all staff, clinicians and managers in all matters logistics.

"Many congratulations Cliff – thank you for all you do for Moorfields, and we hope you have a wonderful time celebrating with the team."





24 local care staff trained in eyecare

Senior nurses from Moorfields have trained 24 local care staff in eye care through the new Eye Envoy Programme initiative. This will benefit around 600 service users in eight care homes across Camden and Islington.

The programme was funded by NHS England/ Health Education England and planned and delivered over three days by two Moorfields senior nurses, Dr Roxanne Crosby-Nwaobi and Tendai Gwenhure. It aims to

increase awareness of safe eye care in social care, upskilling community staff to support local patients with progressive eye conditions, to improve care and reduce hospital admissions. It is believed to be the first ever such course for care staff professionals.

Participant Leleka Henry, a registered nurse, said: "I have learned so much from this course. Residents rely on their eyes, and I will now go back and make sure eyes are included in our holistic health checks.

I will share this knowledge, including implementing the correct drops usage technique, making sure drops are included in daily medication regimes and routinely checking whether deteriorating sight may have contributed to a fall."

“

I have learned so much from this course.

”

Leleka Henry

Moorfields' Pathway to Excellence



Moorfields was one of only 14 trusts in the UK chosen to take part in the Pathway to Excellence programme.

After three years of hard work, Moorfields is one of only six (to date) to have been accredited by the American Nurses Credentialing Center (ANCC) and is now Pathway Designated.

This is built around six standards: health and wellbeing, quality, safety, professional development, and leadership. Each of these feed through directly into ongoing improvements in patient care.

Sheila Adam, chief nurse and director of allied health professionals, said: "I am thrilled to announce this news as a reflection of the care and commitment our nursing teams deliver every day".

Nora Warshawsky, Commissioner of the Pathway to Excellence Programme, added: "These credentials recognise nursing excellence and I am confident that Moorfields nurses have rebounded from the pandemic stronger because of this pursuit of excellence."



“
I am confident that Moorfields nurses have rebounded from the pandemic stronger because of this pursuit of excellence.

”
Nora Warshawsky

Supporting GPs in children's eye health

.....

Annegret Dahlmann-Noor, consultant ophthalmologist, has been awarded an innovation grant by Moorfields Eye Charity to find new and better ways to deliver eye care to children following the Covid-19 pandemic.

During the lockdowns, Moorfields could no longer see many of the children in person – but it was still critical that they received the best eye care. The Moorfields children's service carefully prioritised the most urgent patients, giving advice and guidance to local GPs and optometrists on how to treat lower-risk children.

Consultants and associate specialists in the children's service across all network sites developed the original recommendations which Annegret took forward. This project reviewed and revised the existing guidance for GPs, and the results have now been published across the

North Central London region.

The hope is that GPs will now be confident to treat more children's eye conditions directly in the community. This means faster treatment and better outcomes for children without the disruption of coming to hospital, and allows specialists at Moorfields to focus on giving children with complex conditions the best possible care.

Annegret will now work to see it adopted by the remaining five Integrated Care Boards that cover the London area, as well as creating similar guidance for optometrists.



Annegret Dahlmann-Noor

Spectralis appeal

The charity's summer appeal is raising money for a Spectralis for our Clinical Research Facility. This is a piece of equipment that takes highly accurate, rapid, multi-faceted images of the back and front of a patient's eyes. This allows researchers and clinicians to identify eye conditions, diagnose patients more efficiently and deepen their understanding of eye health in order to develop new treatments.

By securing the Spectralis we can conduct more scans, improve patient



experience and generate a wealth of learnings to share with researchers all over the world.

Visit moorfieldseyecharity.org.uk/spectralisappeal to find out more and donate.

Eye to Eye

Thank you!



£82,000 raised so far



Free will-writing service

Are you thinking about writing or rewriting your will? The charity can help with practical tools and two free offers. With the new face-to-face scheme, you can have a solicitor-written will without leaving the comfort of your home; and the online will writing service includes a half hour consultation with a solicitor.

For more details, please email Jackie Birch, legacy development manager, on jacqueline.birch1@nhs.net or call 020 7521 4697.



Friends of Moorfields 60th Anniversary



2023 marks the 60th anniversary of the Friends of Moorfields. The first meeting in 1963 set out the Friends' original objective: "The raising of money to be spent on increasing the comfort of patients and the nursing staff, outside the allocation provided by the Ministry of Health, and the recruitment of volunteers to help in the many ways which are of infinite importance to the happiness and general welfare of the patients, many of whom for shorter or longer periods are unable to see."

To this day, the Friends continue to endeavour to give everyone who comes to Moorfields the best possible experience.

To mark this momentous milestone, the Friends received an extremely generous donation of £60,000 from former colleague, Rothin

Banerjee. He worked as a principal pharmacist for 27 years at Moorfields Eye Hospital from 1974 to 2001.

This significant donation will help the Friends of Moorfields continue their work to support patients and staff at Moorfields. Mr Banerjee was welcomed to a gathering held by the Friends to honour him for his kind donation.

"We had a lovely evening, catching up with Mr Banerjee and his family," said Naheed Phul, chief pharmacist.

"Something he said really struck a chord: 'As much as I gave to Moorfields, I got so much back'. He was proud, and still is, as so many of us are to say we work here.

"We are very grateful for your donation Mr Banerjee, as were the patients who saw you in the pharmacy."

"As much as I gave to Moorfields, I got so much back"

”

Mr Banerjee





The Future of Eye Care

Our 60th anniversary conference

Join the Friends of Moorfields for a day exploring the latest developments in eye care and learning what the future might hold for patients and their families.

On Saturday 4 November 2023, the Friends are hosting a conference at the King's Fund, 11, Cavendish Square. The Future of Eye Care is aimed

at patients, their carers and loved ones, and will feature presentations and workshops exploring eye care with experts from around Moorfields.

Attendees will have the chance to find out more about data-driven eye care and the latest in research, as well as learning more about specific eye conditions and how treatments for them

might evolve over the next few years and beyond.

Attendance to the conference will be free of charge, but numbers are limited. **Please register your interest by emailing moorfields.friends@nhs.net**



Friends of Moorfields
Eye Hospital

Moorfields governors

Emily Brothers has recently been elected as a patient governor.

.....

“I was referred to Moorfields as a child in 1974, having always had visual (and hearing) impairment. I have always tried to be involved in public and voluntary sector organisations, so I became a member at Moorfields when I was transferred for specialist treatment. In 2016, I was elected as governor for south-west London but, when I relocated, I could no longer represent a geographical constituency. I am now delighted to serve again, as a patient governor.

“I am chair of the Oriel advisory group, representing patients in its decision-making. I have helped guide the consultation with patients and the local community in St Pancras, making sure that patients are able to navigate the last half mile from stations to the new centre independently. I have also advised on its flooring texture, acoustics and layout.

“I have a passion for improving patients’ experience so it matches Moorfields’ clinical and research excellence. I have no sight, so I need to hear your experience of your sight loss at your stage of life to understand and represent you authentically.”

Please contact Emily and all other governors through moorfields.foundation@nhs.net

“**I have a passion for improving patients’ experience so it matches Moorfields’ clinical and research excellence.**

”



GOVERNORS



Become a member

Joining Moorfields as a member gives you the chance to support us and get involved in our work.

Membership is free and all members have a say in how the trust develops, giving the community and our patients the opportunity to shape the future of the services we provide.

To become a member, contact moorfields.foundation@nhs.net

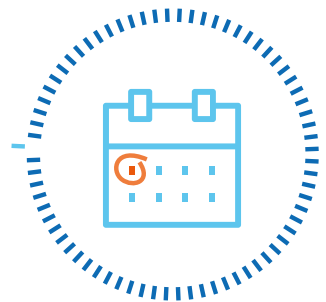
Dates for your diary 2023

Board of directors

28 September
23 November

Membership council

12 September
30 November



Please email moorfields.foundation@nhs.net to attend (via Microsoft Teams).

C O N T A C T U S

Moorfields Eye Hospital NHS Foundation Trust

162 City Road, London EC1V 2PD

Tel 020 7253 3411

Web moorfields.nhs.uk

Follow us on

 @MoorfieldsEyeHospital

 @Moorfields

 @moorfieldsnhs

Moorfields Private Outpatient Centre

9-11 Bath Street, London EC1V 9LF

Moorfields Private Admissions and Refractive Suite

Fourth Floor, 162 City Road, London EC1V 2PD

Tel 020 7566 2803

Email enquiries@moorfieldsprivate.co.uk

Follow us on

 @MoorfieldsPrivate

 @Moorfields_pvt

Moorfields Eye Charity

162 City Road, London EC1V 2PD

Tel 020 7566 2565

Email moorfields.eyecharity@nhs.net

Follow us on

 @MoorfieldsEyeCharityLondon

 @EyeCharity

 @Moorfields_eye_charity

Friends of Moorfields

162 City Road, London EC1V 2PD

Tel 020 7251 1240

Email friends@moorfields.nhs.uk

Follow us on

 @FriendsofMoorfields

 @MoorfieldFriend

 @Friendsofmoorfields

To receive this publication in an alternative format, or to ask to receive it regularly, please contact moorfields.foundation@nhs.net.
